

Visiting the B&O Railroad Museum



A Social Narrative for Young Children





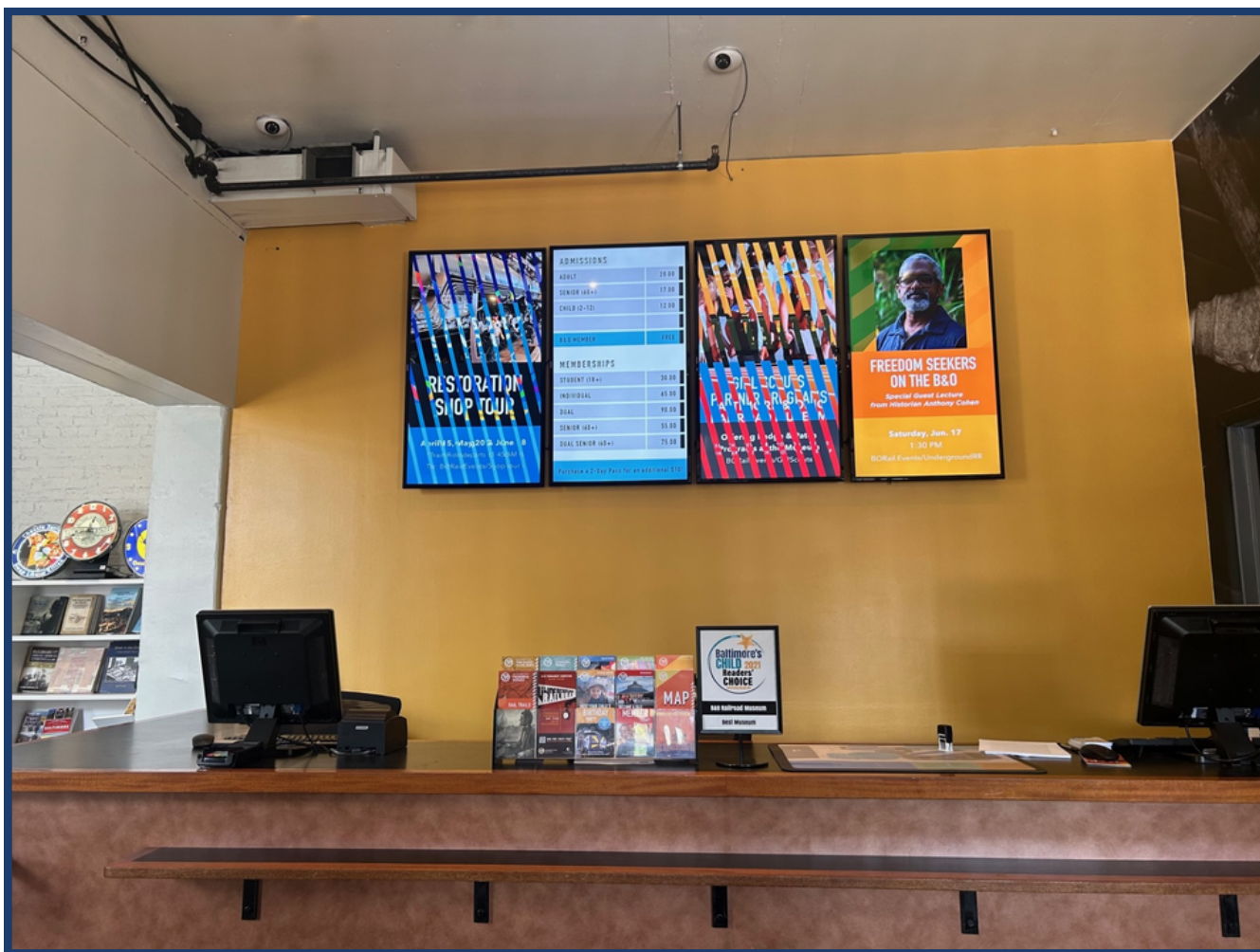
I am going on a trip to the B&O Railroad Museum!



When we arrive, we will go through a large gate and park in the parking lot. There are trains in the parking lot I can look at.



Next, we will walk to the entrance of the museum. I can follow the signs to find it. It is important for me to listen to directions and stay with my adult.



When we walk inside there will be a large desk. Museum staff will give us tickets, I may have to wait in line if the museum is busy. I can borrow a sensory kit if I want to.



After getting our tickets, we can go into the Roundhouse. There are a lot of trains to look at in this building.



If I have questions, we can visit the Info Desk. There might be volunteers here to help. There are also maps and self guided tours on the desk.



In the Roundhouse there are trains I can go inside. These trains will have ramps. I can also visit Junior Junction to read a book or play with toy trains.



Attached to the Roundhouse are some other galleries. One has models of a lot of different trains. Another is about the Underground Railroad.



In the Backyard there are more things to see! There is a model train layout, the North Car Works, and Platforms 1 and 3. I can go inside all the train cars on Platforms 1 and 3.



If I need to use the bathroom, they are inside the Roundhouse or the Education Station. If I need a quiet space to relax I can visit the Bank of America Model Train Gallery near the entrance.



I can eat lunch or a snack in the backyard! I might be able to take a train ride, I will ask my adult if we can do this.



When it is time to leave we will exit the museum through the same door we used to enter. I will have a great visit the B&O Railroad Museum.