

Sensory Sunday

at the

B&O Railroad Museum



A Social Narrative for Teens & Adults





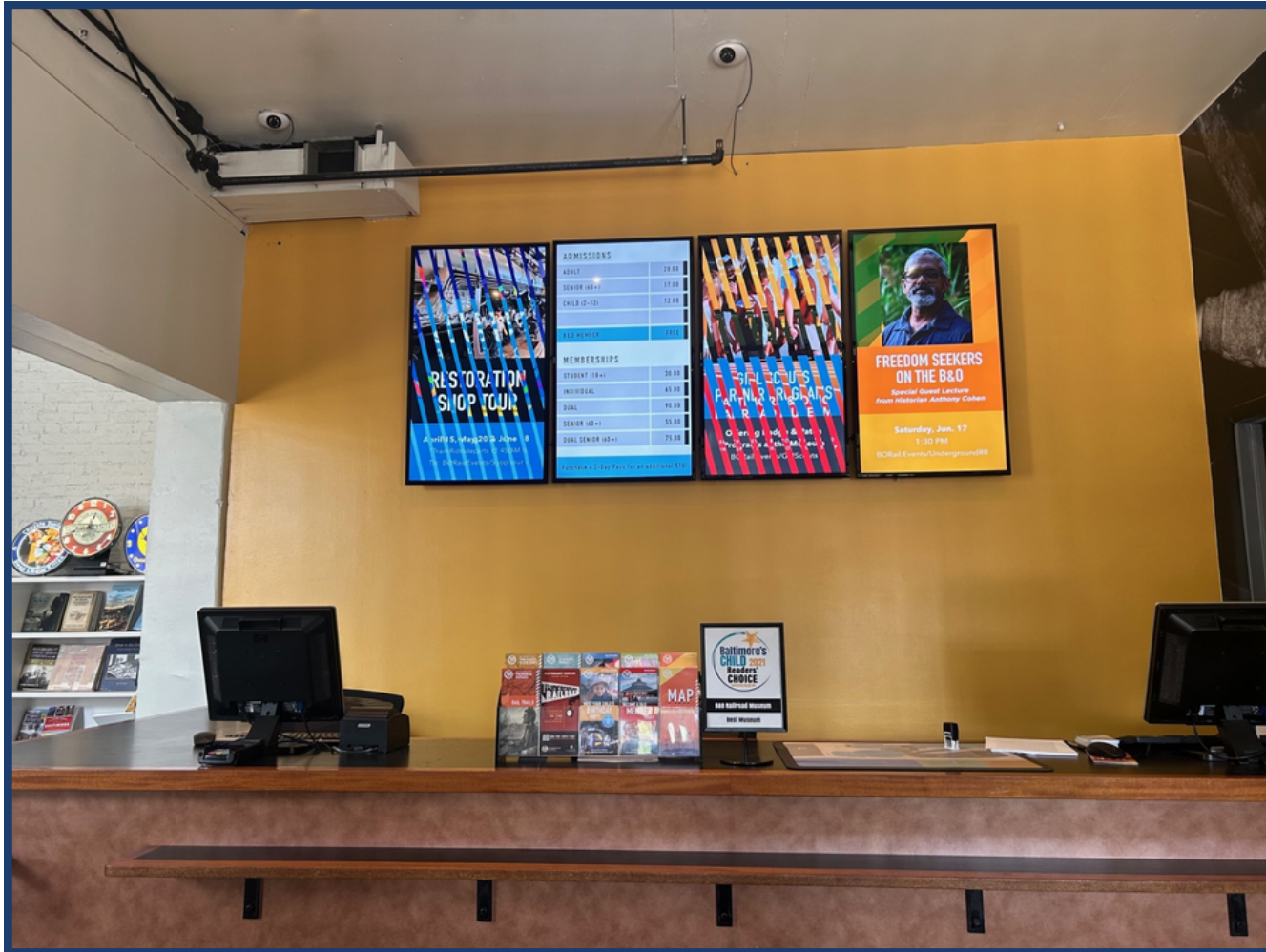
Today you will visit the B&O Railroad Museum for Sensory Sunday.



When you arrive, you will go through a large gate and park in the parking lot. There are trains in the parking lot you can look at.



Next, you will walk to the entrance of the museum. You can follow the signs to find it.



You will purchase tickets from the museum staff when you arrive. There might be a line.



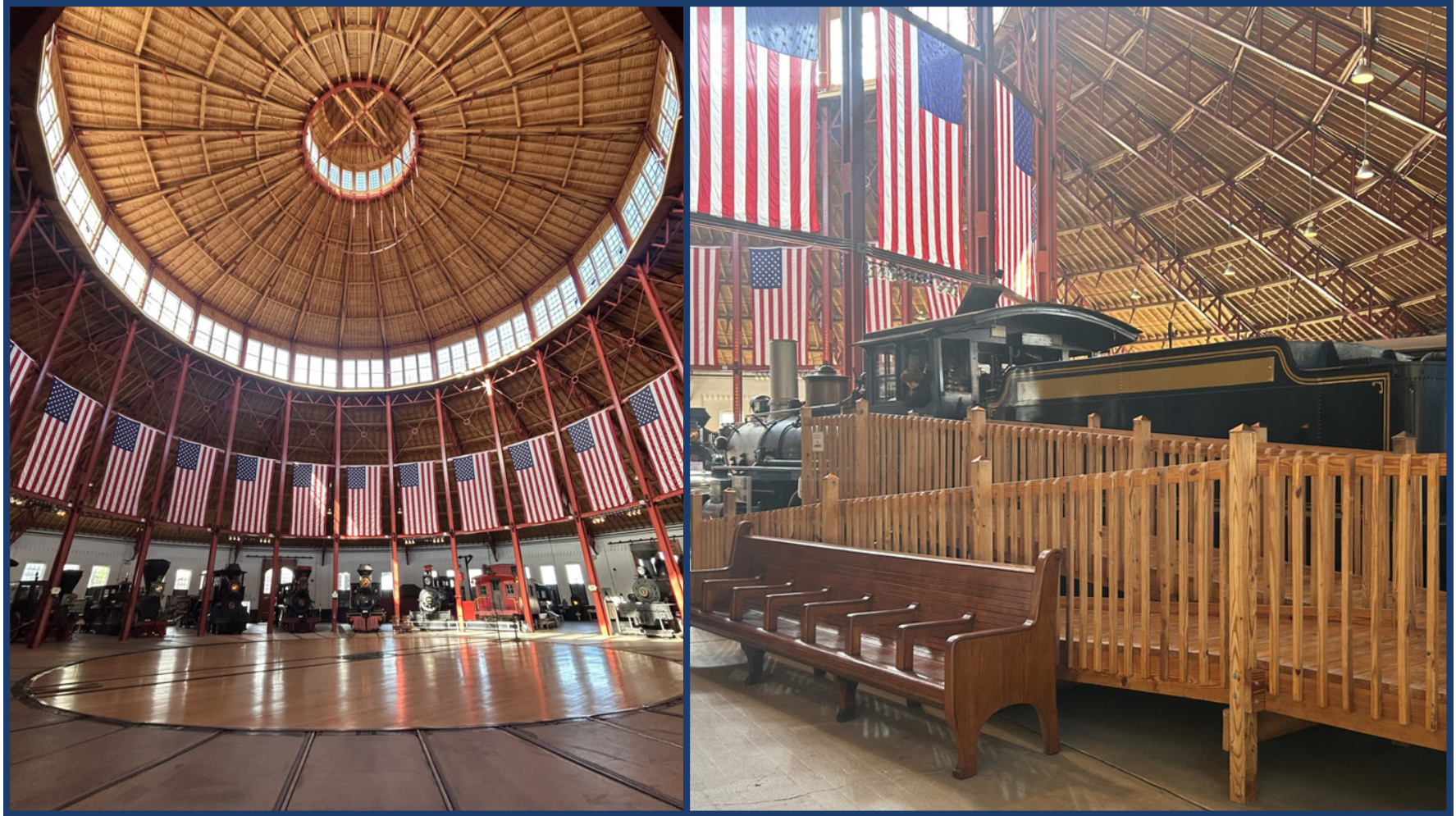
You can borrow a sensory kit and headphones if you would like to. The admissions staff can give these to you.



After getting your tickets, you can enter the museum. There are different exhibits to look at.



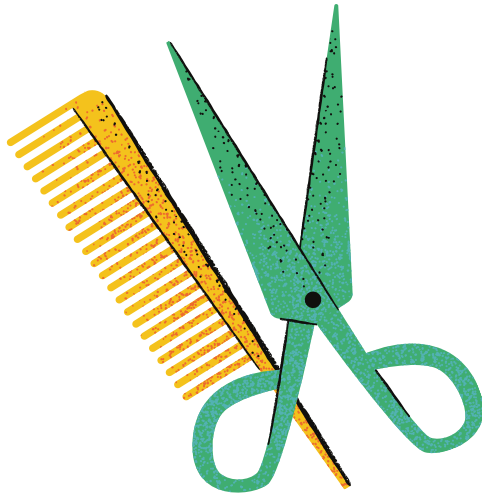
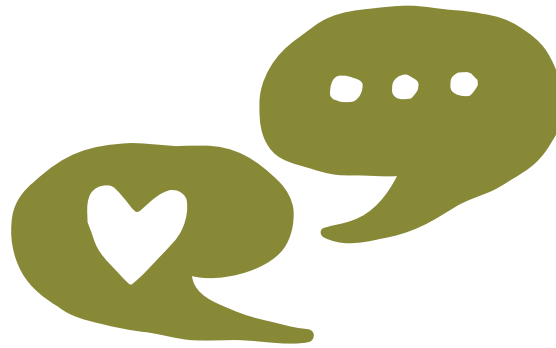
Next, you can go to the Roundhouse!



There are a lot of old trains to look at, you can go inside some of them.



The Roundhouse will also have activities you can do. There will be a craft table and a sensory exploration table.



Some tables in the Roundhouse will have different people I can talk to. They will talk about their job and might have some information or fidgets for you to take.



There might be a sensory inclusive train ride you can take. You can ask the staff at the front desk if there is a train ride.



In the afternoon there will be a museum tour. You can decide if you would like to go on the tour or explore on your own.



After you are done exploring you can leave the museum. The exit is the same door you entered through.